

# Motorised SIRCOVER VS

## 125 to 1600 A



SVRMO 091 A

### Functions

**Motorised SIRCOVER VS** are motorised tri- or tetrapolar switches.

They are a combination of two back to back, interlocked, remote operated disconnecting switches.

They changeover between two low voltage power circuits on load and provide safety isolation.

### Compliance with standards

- IEC 60947-3
- NF EN 60947-3
- BS EN 60947-3
- NBN EN 60947-3
- VDE 0660 Teil 107 (1992)

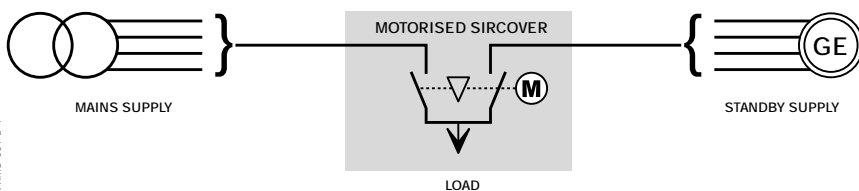
### General characteristics

- 2 stable positions (I, II) and possible automatic switching from one to the other on load (AC-22 and AC-23)
- Position O by manual operation and optionally position O by electrical control
- Fully visible breaking or isolation
- Manual emergency operation
- Locking in position O

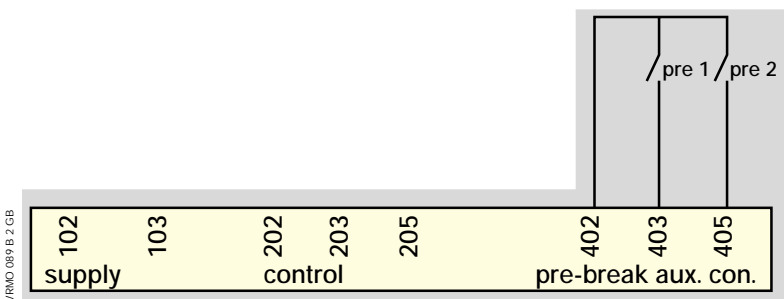
### Manufactured or available on request

- Other supply voltages.

Example of application:  
NORMAL-BACKUP CHANGEOVER SWITCH



SVRMO 007 D 1



SVRMO 089 B 2 GB